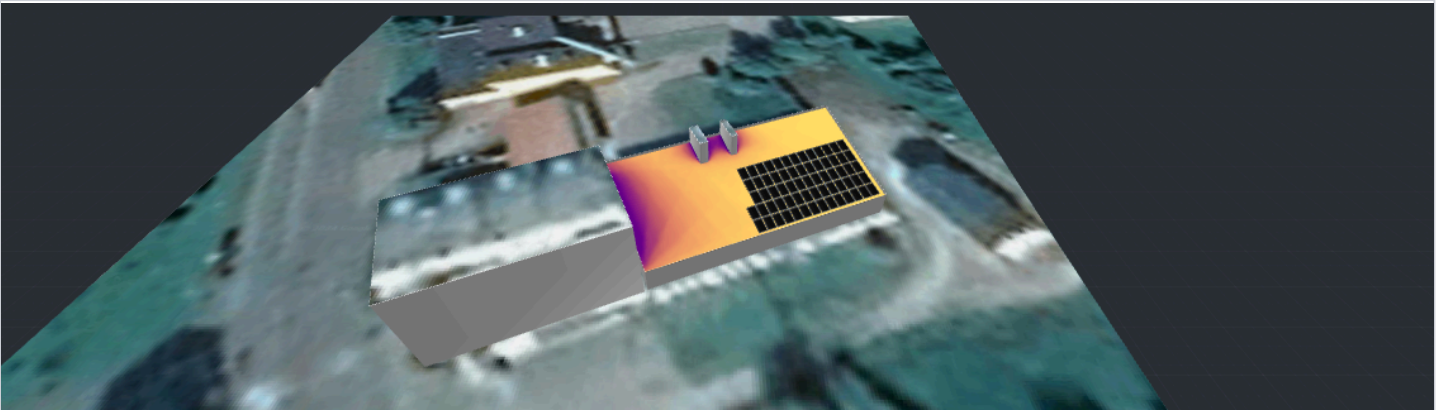


LITESKO KELMĖ

Kelmė, 86135, Lithuania | Apr 23, 2024



SIMULATION RESULTS



Installed DC Power

29.82 kWp



Max Achieved AC Power

25.00 kW



Annual Energy Production

28.96 MWh



CO2 Emission Saved
(Annually)

521.32 kg



Equivalent Trees Planted
(Annually)

24



Max Achieved DC Power

27.84 kW



DC/AC Oversizing

111 %



Max Active AC Power

25.00 kW



Performance Ratio

87 %



Performance Index

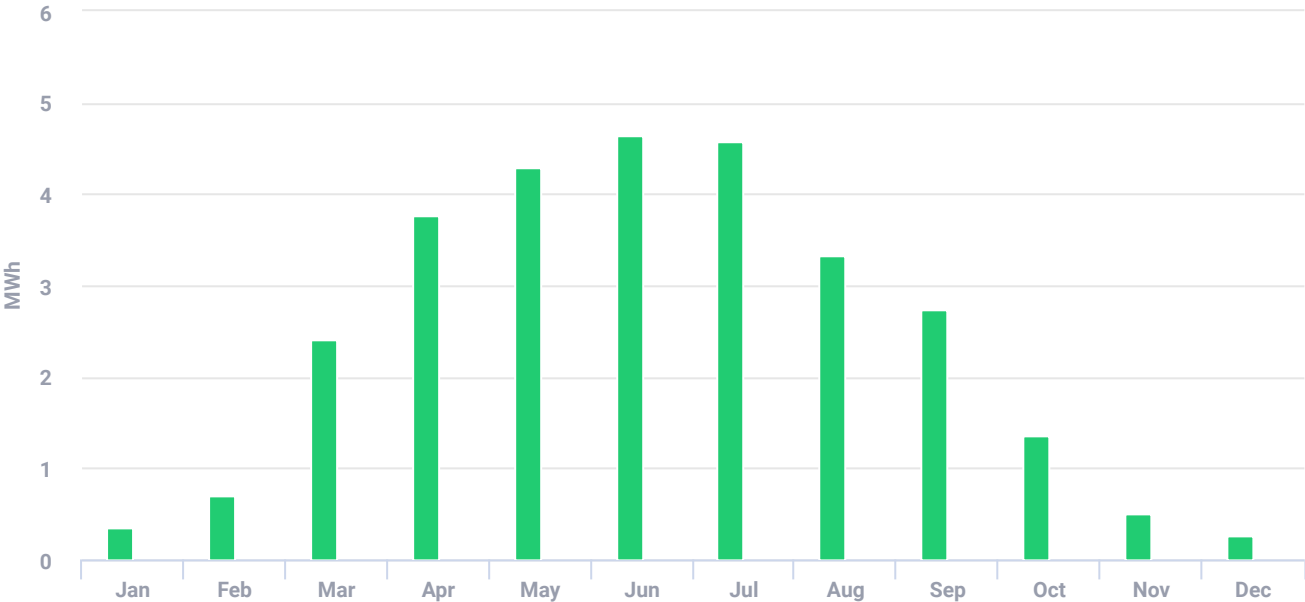
971 kWh/kWp

LITESKO KELMĖ

Kelmė, 86135, Lithuania | Apr 23, 2024



ESTIMATED MONTHLY ENERGY

Solar Production Clipped Energy



Total clipped energy: 0.02%

PV MODULES

# Module	Model	Peak power	Racking type	Orientation	Azimuth	Tilt
67	Shinson Technology Co.,Ltd, S445M54NF3BFB (user-defined)	29.8 kWp			157°	15°
Total:	67	29.8 kWp				